

Didcot Railway Centre 2012 Timetable

January						
Mo	Tu	We	Th	Fr	Sa	Su
						1
2	3	4	5	6	7	8
9	10	11	12	13	14	15
16	17	18	19	20	21	22
23	24	25	26	27	28	29
30	31					

February						
Mo	Tu	We	Th	Fr	Sa	Su
		1	2	3	4	5
6	7	8	9	10	11	12
13	14	15	16	17	18	19
20	21	22	23	24	25	26
27	28	29				

March						
Mo	Tu	We	Th	Fr	Sa	Su
			1	2	3	4
5	6	7	8	9	10	11
12	13	14	15	16	17	18
19	20	21	22	23	24	25
26	27	28	29	30	31	

April						
Mo	Tu	We	Th	Fr	Sa	Su
						1
2	3	4	5	6	7	8
9	10	11	12	13	14	15
16	17	18	19	20	21	22
23	24	25	26	27	28	29
30						

May						
Mo	Tu	We	Th	Fr	Sa	Su
	1	2	3	4	5	6
7	8	9	10	11	12	13
14	15	16	17	18	19	20
21	22	23	24	25	26	27
28	29	30	31			

June						
Mo	Tu	We	Th	Fr	Sa	Su
				1	2	3
4	5	6	7	8	9	10
11	12	13	14	15	16	17
18	19	20	21	22	23	24
25	26	27	28	29	30	

July						
Mo	Tu	We	Th	Fr	Sa	Su
						1
2	3	4	5	6	7	8
9	10	11	12	13	14	15
16	17	18	19	20	21	22
23	24	25	26	27	28	29
30	31					

August						
Mo	Tu	We	Th	Fr	Sa	Su
		1	2	3	4	5
6	7	8	9	10	11	12
13	14	15	16	17	18	19
20	21	22	23	24	25	26
27	28	29	30	31		

September						
Mo	Tu	We	Th	Fr	Sa	Su
					1	2
3	4	5	6	7	8	9
10	11	12	13	14	15	16
17	18	19	20	21	22	23
24	25	26	27	28	29	30

October						
Mo	Tu	We	Th	Fr	Sa	Su
1	2	3	4	5	6	7
8	9	10	11	12	13	14
15	16	17	18	19	20	21
22	23	24	25	26	27	28
29	30	31				

November						
Mo	Tu	We	Th	Fr	Sa	Su
			1	2	3	4
5	6	7	8	9	10	11
12	13	14	15	16	17	18
19	20	21	22	23	24	25
26	27	28	29	30		

December						
Mo	Tu	We	Th	Fr	Sa	Su
					1	2
3	4	5	6	7	8	9
10	11	12	13	14	15	16
17	18	19	20	21	22	23
24	25	26	27	28	29	30
31	1					

Legend

Note- We are CLOSED on days with no colour

 3 Gala Marking the closure of the Didcot, Newbury & Southampton Railway

 15 Gala "All in a Days Work"

 3 Static open days

 3 Running Days

 3 Enhanced Running Days

 3 Days Out with Thomas

 3 Thomas & Father Christmas

Please view our website www.didcotrailwaycentre.org.uk for more information

Gate opening times: 10.30 -15.30 except on running days between **3rd March and 7th October: 10.30 -16.30.**

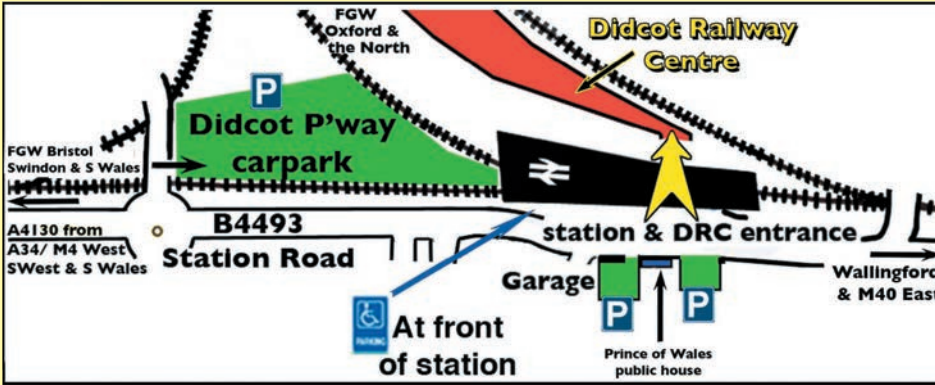
Admission prices: Adults prices vary from £5 to £10 depending on the event with reductions for children and over 60s, and discounts for families (two adults and two children) at most events. See the website for up-to-date information.
No late entry discount.

Snacks, lunches and drinks are served in the Refreshment Room, or you can bring your own food and watch the trains going past from the picnic area. A wide range of postcards, books, DVDs, Thomas gifts and other railway souvenirs is on sale in the shop. Instant membership of the Great Western Society can be taken out on every day that the Railway Centre is open, except during 'Day Out With Thomas', 'Day Out With Thomas and Father Christmas' or special events.

The locomotives and rolling stock illustrated in this leaflet and the arrangements shown in the programme are subject to alteration at short notice if unforeseen circumstances occur. It may not be possible to access all areas from which photographs in this leaflet have been taken. The Great Western Society and its subsidiaries accept no liability for any delay, loss, inconvenience or disappointment however caused.

Accessibility (See detailed map below)

Access from the APCOA car park can involve a 200 yard walk and is over a footbridge. You will find it convenient for passengers to disembark at the entrance to Didcot Parkway railway station, before the driver parks the car. We ask visitors with mobility difficulties to contact us on 01235 817200 or by email in advance of their visit to discuss access needs. From the station entrance, access is via the station subway and an unavoidable flight of 18 steps leading into the railway centre. We have our own wheelchairs available for visitors who can climb the stairs with help. Once inside the railway centre there is level access to most areas. If you are a blue badge holder you can park free of charge in the east car park at the front of Didcot Parkway Station.



Didcot Railway Centre

Didcot Oxfordshire OX11 7NJ

Phone: 01235 817200

Email:

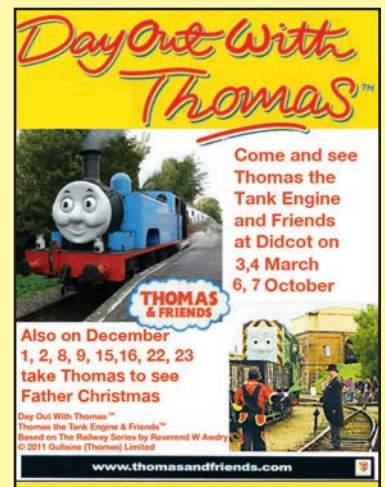
info@didcotrailwaycentre.org.uk

Website:

www.didcotrailwaycentre.org.uk



The Great Western Society is a Registered Charity: No 272616



What you can see and do at Didcot Railway Centre

The Great Western Railway spanned five generations, from 1835 when it was incorporated by act of parliament, until 1947 when it was nationalised as part of British Railways.

The collection of locomotives, carriages and wagons at Didcot Railway Centre encapsulates the Great Western Railway's history and is a great way to educate and entertain today's generations of all ages in the experience their ancestors had when travelling by train. From the beginning of Queen Victoria's reign, through the Edwardian zenith of empire, to the world conflicts and quest for speed in the first half of the 20th century, when the railways developed steam power to the ultimate to counter the developing competition from road and air transport.

Didcot Railway Centre brings all this to life in a railway context with the working replica *Fire Fly* and its Brunel-era broad gauge train of 1840; the late Victorian four-wheeled and clerestory coaches; the Edwardian steam railmotor of 1908; the mighty *Castle* and *King* classes of the 1920s and 1930s; the diesel railcar and futuristic gas turbine locomotive of the 1940s. Plus a full supporting cast of freight, mixed traffic and shunting locomotives and the rolling stock they hauled.

It is housed in 22 acres alongside Didcot Parkway railway station. At its heart is the historic Engine Shed which still has all the apparatus needed to maintain steam locomotives. Three running lines, one of Brunel's broad gauge, give a taste of travel in the 19th and early 20th centuries. The atmosphere is completed by stations, signal boxes and other original lineside features brought from locations around the GWR system. There is a museum and archive displaying the smaller artefacts and original colourful posters, a Science, Learning and Railways interactive display, the original air raid shelter from 1940, plus shop and refreshment room.

"It has been the highlight of this trip. We have had a wonderful time." Anita Blair from San Francisco.

"I thoroughly enjoyed having to walk through the wooded areas, across the train tracks and through the engine sheds and the like to reach each point of interest." Carla Byrne.



The train that took passengers to the 1908 Olympics

Steam railmotor 93 was built in March 1908 and allocated to Southall engine shed, working suburban services in west London. During its first year it carried spectators to the first London Olympics, held at Shepherd's Bush alongside the Franco-British Exhibition in 1908.

The Didcot promise

Up close and personal

You can walk around the engine shed where the locomotives are so much more impressive seen at ground level than when viewed from a station platform – how does your height compare with a 6 ft 8 in diameter driving wheel?

One price gets all

Once you pay the admission price there are no extras for train rides on running days – as many as you want – or admission to any of the attractions at the railway centre.

Vintage carriages guaranteed

All trains rides on running days are in vintage carriages giving the authentic atmosphere of travel in the first half of the 20th century.

Never the same two days running

The railway centre is a working museum and exhibits are regularly moved around for operational or restoration purposes. So things will never be in the same place when you next visit.